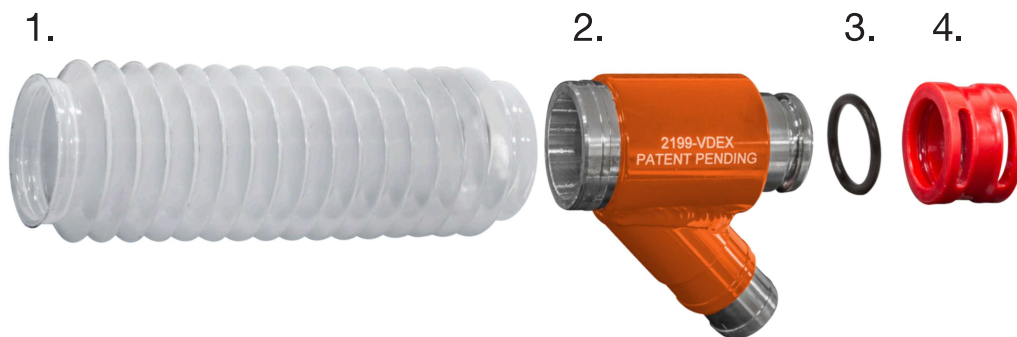
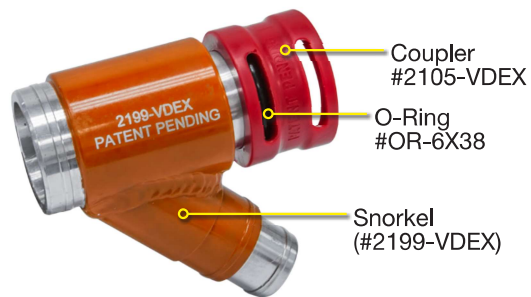


Snorkel Assembly Installation

VDEX Snorkel Assembly for Rivet Buster, Roto Hammer and Chipping Hammer

In the VDEX kit, the VDEX Snorkel (2), O-Ring (3) and Coupler (4) have already been assembled for ease of use and time-saving on-site. There should be no need to dismantle this sub-assembly, but should you need to, you can replace the O-Ring (3).



If you dismantle the Snorkel Kit Assembly, follow the steps below for reassembly.

Install O-Ring (3) in Coupler (4) groove. Apply a small amount of oil to the O-Ring.

Push firmly down on Coupler over the Snorkel (2) until the O-Ring seats in the groove.

To install the Bellow (1) to the Snorkel Assy: Take the Bellow and Snorkel and stand them up on the bench.

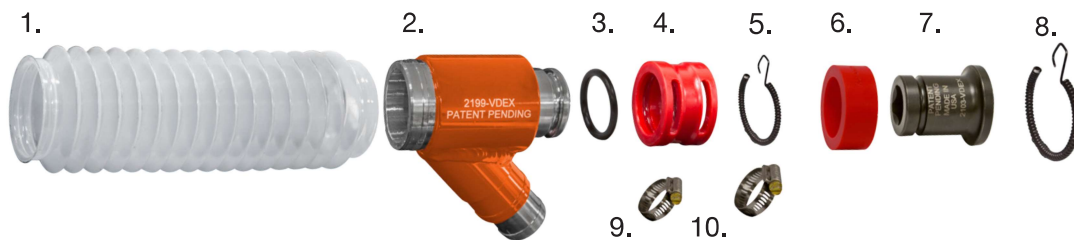
Push down firmly on the Bellow with the palm of your hand until it is completely collapsed and hold with your fingers. Now push the Bellow firmly onto the Snorkel until it is fully seated.

Rivet Buster Component Identification

RB-VDEX

One Size Fits All Rivet Busters

Rivet Buster Attachments are designed to fit every Rivet Buster in the rental and industrial market today. We can accommodate any Rivet Buster, with VDEX attachments.



RB-VDEX Kit Consists of:		
Part No.		Description
1.	2198-VDEX	Bellow O.A.L. 8"
2.	2199-VDEX	Snorkel
3.	OR-6X38	O-Ring
4.	2105-VDEX	Coupler
5.	1194-2	Retainer Spring
6.	2104P-RED	Polymer Bumper
7.	2103-VDEX	Extended Lower Sleeve
8.	2194	Retainer Spring
9.	HS16	1-1/4" Hose Clamp
10.	HS24	1-1/2" Hose Clamp

Optional Split Sleeve



2103S-VDEX
Split Extended
Lower Sleeve

Required when using
Bushing Tools and
Wide Buster Chisels

Rivet Buster Installation

The first step is to remove the existing Safety Retainer and Spring from your Rivet Buster. Remove the Lower Sleeve and Bumper from inside the Safety Retainer and set the Lower Sleeve, Bumper and Spring to the side since they will not be used in the assembly.

Next, install the new Rubber Bumper (6) on the included Lower Sleeve (7). Install this assembly into your Safety Retainer along with the Chisel. Install the Safety Retainer and Chisel onto the Rivet Buster and secure the assembly with the Retainer Spring (8).

Then, take the Bellow (1) and Snorkel assembly (2, 3, & 4) and stand them up on the bench.

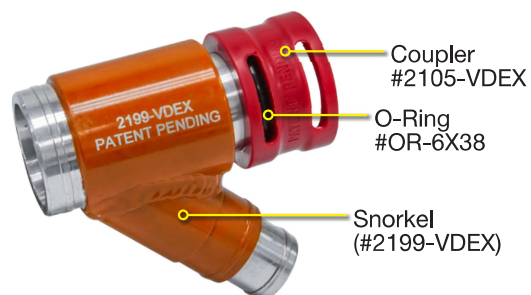
Push down firmly on the Bellow with the palm of your hand until it is completely collapsed and hold with your fingers. Now push the Bellow firmly onto the Snorkel assembly until it is fully seated.

Finally, slide the Snorkel assembly with Bellow over the Chisel and over the nose of the Lower Sleeve. Secure this with the Spring Retainer (5).

Now you're ready to connect your VDEX-equipped Rivet Buster to the Vacuum system using the 1-1/4" (9) or 1-1/2" (10) clamps to secure the vacuum hose to the Snorkel outlet.

VDEX Snorkel Assembly

In the VDEX kit, the VDEX Snorkel (2), O-Ring (3) and Coupler (4) have already been assembled for ease of use and time-saving on-site. There should be no need to dismantle this sub-assembly, but should you need to, you can replace the O-Ring (3). Assembly instructions see page 7.



Roto Hammer Component Identification

RH-VDEX

Roto Hammer Retainer Kits Clamshell Design Fits Over Tool

RH-VDEX attachments are designed to fit a variety of tool brands. See chart below for the model of your Roto Hammer when ordering. The RH-VDEX attaches to the Roto Hammer using the VDEX Clamshell design. Simply install the clamshell over the nose of the Roto Hammer and install o-rings. Then attach the coupler with retainer springs to the snorkel and bellow assembly.



RH-VDEX Kit Consists of:		
Part No.	Description	
1.	2198-VDEX	Bellow O.A.L. 8"
2.	2199-VDEX	Snorkel
3.	OR-6X38	O-Ring
4.	2105-VDEX	Coupler
5.	1194-2	Retainer Spring
6.	See Chart	Roto Hammer Clamshell
7.	OR-6230-2	O-Rings (3)
8.	HS16	1-1/4" Hose Clamp
9.	HS24	1-1/2" Hose Clamp



RH-VDEX	
Clamshell Adapters	Roto Hammer Kits
VV-0199-9B	RH-VDEX-9B (MP-9B, CP-9B)
VV-0199-MRD9	RH-VDEX-MRD9 (SUL-MRD9)
VV-0199-THD1100N	RH-VDEX-THD1100 (TOKU THD-1100N)

Roto Hammer Installation

The first step is to install the drill steel into the Quick Change Retainer on the tool.

Next, assemble the Clamshell pieces. Join the Clamshell halves (6) together on the table. While holding in place, roll the first O-Ring (7) over the nose and into the O-Ring groove. Now, install the other two O-Rings (7) over the nose and place directly behind the first O-Ring.

Next, slide the Clamshell assembly over the chisel. Spread the halves apart with your fingers in the holes provided to slide the Clamshell assembly over the Quick Change Safety Retainer. Now slide the two O-Rings into the grooves to secure the VDEX Clamshell to the tool.

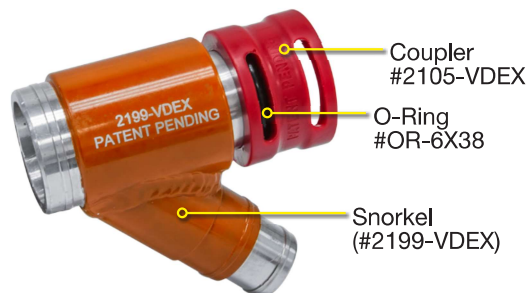
Then, take the Bellow (1) and Snorkel assembly (2, 3, & 4) and stand them up on the bench. Push down firmly on the Bellow with the palm of your hand until it is completely collapsed and hold with your fingers. Now push the Bellow firmly onto the Snorkel assembly until it is fully seated.

Finally, slide the Snorkel assembly with Bellow over the drill steel and over the nose of the Clamshell. Secure this with the Spring Retainer (5).

Now you're ready to connect your VDEX-equipped Roto Hammer to the Vacuum System using the 1-1/4" (8) or 1-1/2" (9) clamps to secure the vacuum hose to the Snorkel outlet.

VDEX Snorkel Assembly

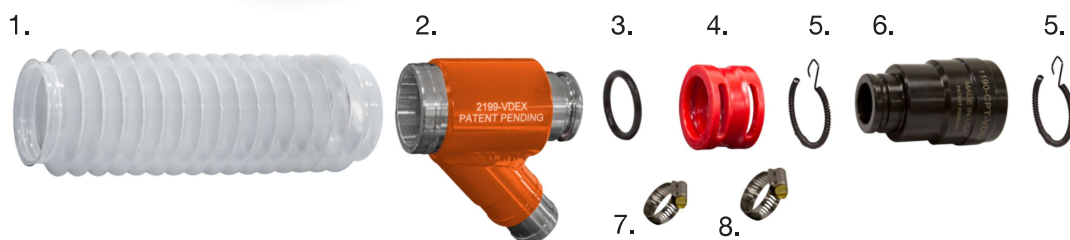
In the VDEX kit, the VDEX Snorkel (2), O-Ring (3) and Coupler (4) have already been assembled for ease of use and time-saving on-site. There should be no need to dismantle this sub-assembly, but should you need to, you can replace the O-Ring (3). Assembly instructions see page 7.



Chipping Hammer Component Identification

CH-VDEX

Solid Retainer Series, Oval and Round Collar for Four-Bolt or Gooseneck Chipping Hammers
CH-VDEX attachments are brand specific. See chart below for the model of your Chipping Hammer when ordering. The CH-VDEX attaches to the Chipping Hammer using the solid metal retainer as the anchoring mechanism. The retainers have specific tapers or straight shank diameter mounts.



ROUND COLLAR



OVAL COLLAR



W-SERIES THREADED



MINI



CH-VDEX Kit Consists of:

Part No.	Description
1. 2198-VDEX	Bellow O.A.L. 8"
2. 2199-VDEX	Snorkel
3. OR-6X38	O-Ring
4. 2105-VDEX	Coupler
5. 1194-2	Retainer Springs (2)
6. See Chart	Chipping Hammer Retainer
7. HS16	1-1/4" Hose Clamp
8. HS24	1-1/2" Hose Clamp

Round Collar Retainer Kits

Retainers only Part No.	Tool Specific Kits
1190R-CPT-VDEX	CH-VDEX-CPT-RC (MPT, CP, SUL)
1190R-IR-VDEX	CH-VDEX-IR-RC
1190R-1.942-VDEX	CH-VDEX-APT-RC
HHW1-300-VDEX	CH-VDEX-W-SERIES

Oval Collar Retainer Kits

Retainers only Part No.	Tool Specific Kits
1190-CPT-VDEX	CH-VDEX-CPT (fits MPT, CP, SUL)
1190-IR-VDEX	CH-VDEX-IR (fits IR)
1190-APT-VDEX	CH-VDEX-APT (fits APT)
1190-MINI-VDEX	*CH-VDEX-MINI
HHW1-300-VDEX	*CH-VDEX-W-SERIES

* W-Series and Mini Retainers are not the same price as standard kits

Chipping Hammer Installation

The first step is to remove the existing Retainer and Retaining Spring from the Chipping Hammer. Set these parts to the side as they will not be used in this assembly.

Next, install the chisel into the Retainer (6). Install the Retainer and chisel onto the Chipping Hammer and secure the assembly with the Retainer Spring (5).

Then, take the Bellow (1) and Snorkel assembly (2, 3, & 4) and stand them up on the bench. Push down firmly on the Bellow

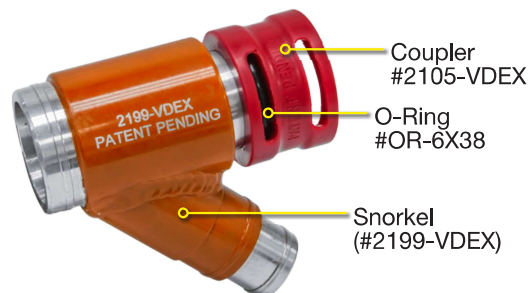
with the palm of your hand until it is completely collapsed and hold with your fingers. Now push the Bellow firmly onto the Snorkel assembly until it is fully seated.

Finally, slide the Snorkel assembly with Bellow over the chisel and over the nose of the Retainer. Then secure this with the Retainer Spring (5).

Now you're ready to connect your VDEX equipped Chipping Hammer to the Vacuum system using the 1-1/4" (7) or 1-1/2" (8) clamps to secure the vacuum hose to the Snorkel outlet.

VDEX Snorkel Assembly

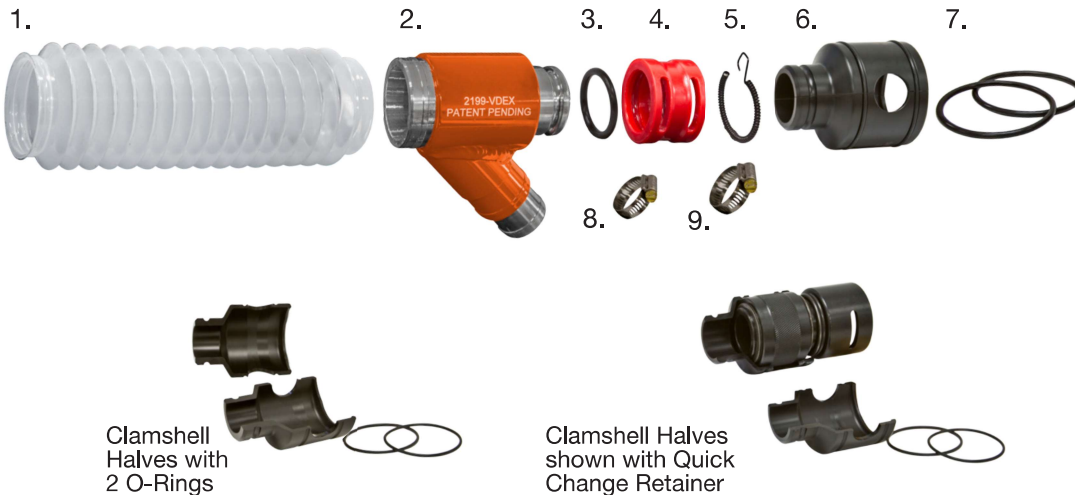
In the VDEX kit, the VDEX Snorkel (2), O-Ring (3) and Coupler (4) have already been assembled for ease of use and time-saving on-site. There should be no need to dismantle this sub-assembly, but should you need to, you can replace the O-Ring (3). Assembly instructions see page 7.



Chipping Hammer w/1291 Quick Change Component Identification

CH-VDEX-1291

Quick Change Retainer Series, Round Collar for Four-Bolt or Gooseneck Chipping Hammers
 One size fits most common industry standard 1291 Series Quick Change Retainers. The unique design of the VDEX Clamshell allows the CH-VDEX-1291 series to be installed over the sleeve of the Quick Change Retainer, regardless of the tool manufacturer (brand) or handle configuration.



CH-VDEX-1291 Kit Consists of:		
Part No.	Description	
1.	2198-VDEX	Bellow O.A.L. 8"
2.	2199-VDEX	Snorkel
3.	OR-6X38	O-Ring
4.	2105-VDEX	Coupler
5.	1194-2	Retainer Spring
6.	VV-0199-1291QC	Clamshell Adapter
7.	OR-6230-6	O-Rings
8.	HS16	1-1/4" Hose Clamp
9.	HS24	1-1/2" Hose Clamp

Clamshell Adapter and O-Rings
One size fits all Q.C. retainers
VV-0199-1291QC

Quick Change Retainer Kits
1291 Retainer, Clamshell & O-Rings
1291-SUL2-VDEX (MPT, CP, SUL)
1291-IRC2-VDEX (IR)
1291-1,942-VDEX (APT)

Chipping Hammer Installation

The first step is to install the chisel into the Quick Change Retainer on the tool.

Next, assemble the Clamshell pieces. Join the Clamshell halves (6) together on the table. While holding in place, roll the first O-Ring (7) over the nose and into the O-Ring groove. Now install the other O-Ring (7) over the nose and place directly behind the first O-Ring.

Next, slide the Clamshell assembly over the chisel. Spread the halves apart with your fingers in the holes provided to slide the Clamshell assembly over the Quick Change Retainer. Now slide the second O-Ring into the remaining groove to secure the VDEX Clamshell to the tool.

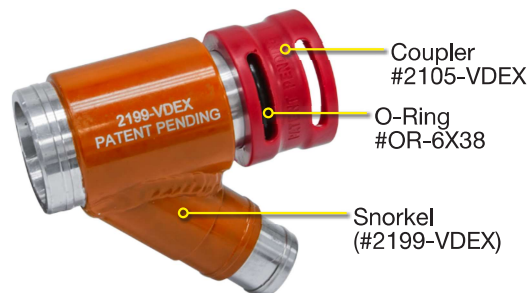
Then, take the Bellow (1) and Snorkel assembly (2, 3, & 4) and stand them up on the bench. Push down firmly on the Bellow with the palm of your hand until it is completely collapsed and hold with your fingers. Now push the Bellow firmly onto the Snorkel assembly until it is fully seated.

Finally, slide the Snorkel assembly with Bellow over the chisel and over the nose of the Clamshell and secure this with the Retainer Spring (5).

Now you're ready to connect your VDEX-equipped quick change Chipping Hammer to the Vacuum system using the 1-1/4" (8) or 1-1/2" (9) clamps to secure the vacuum hose to the Snorkel outlet.

VDEX Snorkel Assembly

In the VDEX kit, the VDEX Snorkel (2), O-Ring (3) and Coupler (4) have already been assembled for ease of use and time-saving on-site. There should be no need to dismantle this sub-assembly, but should you need to, you can replace the O-Ring (3). Assembly instructions see page 7.



Pavement Breaker Component Identification

PB-RD-VDEX

Pavement Breaker and Rock Drill Attachment

- PB-RD-VDEX fits all pneumatic, electric, gas powered and hand held hydraulic Pavement Breakers regardless of class and shank size.
- The PB-RD-VDEX also fits all Rock Drills.
- Our patented Friction Mag design attaches to the chisel rather than the tool.
- The patented Friction Mag device allows the PB-RD-VDEX to be used on Rock Drill applications.



YOUR UNIVERSAL SOLUTION!

- FITS ALL PNEUMATIC, ELECTRIC, GAS POWERED AND HAND HELD HYDRAULIC PAVEMENT BREAKERS
- FITS ALL ROCK DRILLS
- ONE SIZE FITS ALL!

PB-RD-VDEX Kit Consists of:

Part No.	Description
1. 2198-VDEX-HLF	Bellow O.A.L. 4"
2. 2199-PB-RD-VDEX	Snorkel Attachment
3. 2198-VDEX	Bellow O.A.L. 8"
4. HS16	1-1/4" Hose Clamp
5. HS24	1-1/2" Hose Clamp

Accessories (Not Included in Kit)

6. VV-0021	Bellow Extension
7. VDEX-NZL-4IN	Bristle Foot Extension



Pavement Breaker Installation

The first step is to install the breaker steel into the tool and secure with the latch.

To join the Bellow (1, 3) pieces to the Snorkel (2), stand the Bellows up on the bench. Push down on the first Bellow with the palm of your hand until it is completely collapsed and hold with your fingers. Now push the Bellow firmly onto the Snorkel until it is fully seated. Next flip this assembly over and repeat the process with the second Bellow. You will end up collapsing both Bellows as you firmly press the second bellow onto Snorkel.

Next, slide the VDEX Snorkel assembly over the breaker steel. You will likely have to shorten or

add Bellows to your assembly depending on the length of your breaker steel.

Now you're ready to connect your VDEX-equipped Pavement Breaker to the Vacuum system using the 1-1/4" (4) or 1-1/2" (5) clamps to secure the vacuum hose to the Snorkel outlet.

*If you need additional length of bellows, join two bellow (3) pieces together with the one bellow extension (6). Cut bellow to proper length.

**If using a wide chisel, the bristle foot extension (7) can be used to surround the larger flat.

Rock Drill Component Identification

PB-RD-VDEX

Pavement Breaker and Rock Drill Attachment

- PB-RD-VDEX fits all pneumatic, electric gas powered and hand held hydraulic Rock Drills.
- The PB-RD-VDEX also fits all Pavement Breakers.
- Our patented Friction Mag design attaches to the chisel rather than the tool.
- The Friction Mag device rotates when used with Rock Drills.
- The Friction Mag device allows the PB-RD-VDEX to be easily installed over the shank and collar end of all Rock Drill steel.
- When using Rock Drill steel and bits over 1-7/8" diameter it is recommended to use the VDEX-NZL-4IN Bristle Foot.



YOUR UNIVERSAL SOLUTION!

- FITS ALL PNEUMATIC, ELECTRIC, GAS POWERED AND HAND HELD HYDRAULIC ROCK DRILLS
- FITS ALL PAVEMENT BREAKERS
- ONE SIZE FITS ALL!

PB-RD-VDEX Kit Consists of:

Part No.	Description
1. 2198-VDEX-HLF	Bellow O.A.L. 4"
2. 2199-PB-RD-VDEX	Snorkel Attachment
3. 2198-VDEX	Bellow O.A.L. 8"
4. HS16	1-1/4" Hose Clamp
5. HS24	1-1/2" Hose Clamp

Accessories (Not Included in Kit)

6. VV-0021	Bellow Extension
7. VDEX-NZL-4IN	Bristle Foot Extension

Rock Drill Installation

To join the Bellow (1, 3) pieces to the Snorkel (2), stand the Bellows up on the bench. Push down on the first bellow with the palm of your hand until it is completely collapsed and hold with your fingers. Now push the Bellow firmly onto the Snorkel until it is fully seated. Next flip this assembly over and repeat the process with the second Bellow. You will end up collapsing both Bellows as you firmly press the second Bellow onto Snorkel.

Next, slide the Snorkel assembly over the shank of the drill steel.

Finally, install the drill steel into the tool and secure with the latch. You will likely have to shorten or add Bellows to your assembly depending on the

length of your drill steel.

Now you're ready to connect your VDEX-equipped Rock Drill to the Vacuum system using the 1-1/4" (4) or 1-1/2" (5) clamps to secure the vacuum hose to the Snorkel outlet.

*If you need additional length of bellows, join two bellow (3) pieces together with the one bellow extension (6). Cut bellow to proper length.

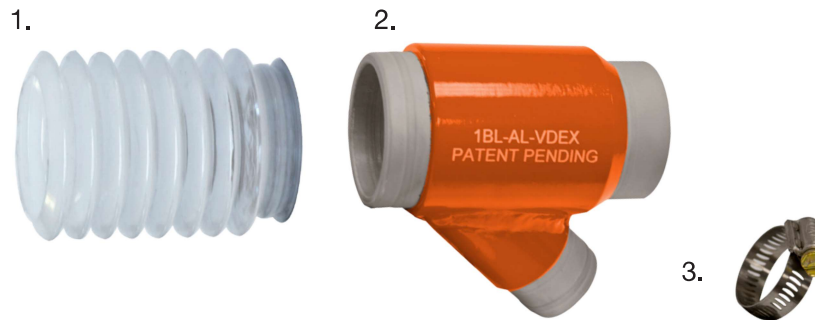
**If using a larger rock bit, the bristle foot extension (7) can be used to surround the larger diameter of the rock bit.

Needle Scaler Component Identification

1BLNS-VDEX

Aluminum Body Industrial Grade Vacuum Dust Extraction Attachment

1BLNS-VDEX is designed to fit over the Needle Tube on the 1BL Style Needle Scaler. The aluminum Snorkel slides over the nose of the Needle Scaler and an O-Ring on the inside of the Snorkel keeps the attachment from sliding off the Needle Tube.



1BLNS-VDEX Kit Consists of:		
Part No.	Description	
1.	2198-VDEX-HLF	Bellow O.A.L. 4"
2.	1BL-AL-VDEX-RED	Snorkel
3.	HS16	1-1/4" Hose Clamp

Needle Scaler Installation

The first step is to take the Bellow (1) and Snorkel (2) and stand them up on the bench. Push down firmly on the Bellow with the palm of your hand until it is completely collapsed and hold with your fingers. Now push the Bellow firmly onto the Snorkel assembly until it is fully seated.

Next, slide Snorkel assembly with Bellow over the 1BL Needle Scaler. There is an O-Ring installed in the Snorkel to keep the assembly on the tool.

Now you're ready to connect your VDEX-equipped 1BL Style Needle Scaler to the Vacuum system using the 1-1/4" (3) clamps to secure the vacuum hose to the Snorkel outlet.

Water Plug Attachment Component Identification

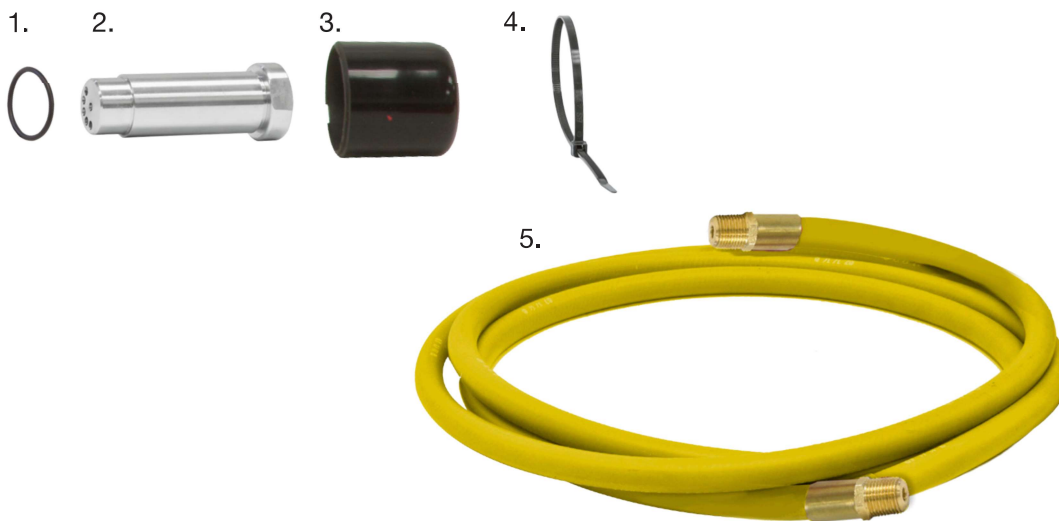
2199-VDEX-WP-ASM

Water Plug for Use with VDEX Attachments

The VDEX Water Plug attachment was designed for applications that require water to suppress dust. It can easily be used with your existing 2199-VDEX Snorkel or PB-RD-VDEX Pavement Breaker/Rock Drill attachment.



2199-VDEX-WP-ASM



2199-VDEX-WP-ASM Kit Consists of:		
Part No.		Description
1.	568-020BN70	O-Ring
2.	2199-VDEX-WPADP	Water Plug Adapter
3.	2199-VDEX-WPCAP	Water Plug Cap
4.	CT-134-50	Zip Tie
5.	WH-2	10ft Hose Assembly
6.	T400FM	1/4" Mini Ball Valve
7.	PF20984	1-1/2" Bushing 1/2" M x 1/4"
8.	10003W	Swivel Hose w/R05103W



Water Plug Installation

To install, pull the black rubber Water Plug Cap (3) back on the Hose (5) and insert the Water Plug Adapter (2) into the Vacuum Port of your VDEX Snorkel assembly.

The red dot must be facing the valley of the Snorkel assembly.

Press firmly until the O-Ring is seated.

Finally, push the Water Plug Cap back over the Vacuum Port of your VDEX Snorkel assembly.

A Zip Tie (4) is included to help keep the Water Plug Cap in place.

Now your VDEX Snorkel assembly is ready to be used with water using the standard Water Hose Coupling (8). A Ball Valve (6) is installed on the Hose Assembly to control the flow of water.

Whip Hose Assemblies

HYDRAULIC WHIP HOSE ASSEMBLIES



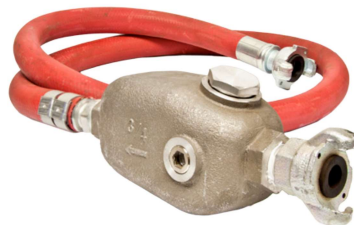
3HW-HYD



3HW-HYD-F

Model	Assembly Components			
	Fitting to Tool	Hose	Lubricator	Filter
2HW-HYD	3/8" MPT	1/2" ID x 6 ft	0-R w/CP Fitting	-
3HW-HYD	1/2" MPT			-
3HW-HYD-F	1/2" MPT			9074M

LUBRICATOR WHIP HOSE ASSEMBLIES



WH-755-2R

Model	Assembly Components		
	Fitting to Tool	Hose	Lubricator
MP-1HW-HDS	1/4" MPT	1/2" ID x 6 ft	0-R
MP-2HW-HDS	3/8" MPT		
MP-3HW-HDS	1/2" MPT		
MP-4HW-HDS	L-1-E Swivel (7/8"-24 thread)		
MP-4W-0.500-HDS	L-3-E Swivel (1/2" MPT)		
WH-755-2R	3/4" Universal Coupling	3/4" ID x 5 ft	2-R

TAM3P Venturi Vacuum Complete

TAM3P VACUUM

Dust Extraction Vacuum System for All Vdex Attachments

The TAM3P vacuum is an air operated venturi vacuum designed to be used in conjunction with the VDEX attachments for dust collection. The vacuum is supplied with a "T" connection called the VDEX-WHIP. Connect VDEX-WHIP to the main air supply. The Quick Coupler end of the hose will connect to the vacuum. That will leave two open ports on the "T" fitting; one for their 3/4" supply line from the air source and the other port will connect the whip hose. See chart for whip hoses for all tools including Pavement Breakers and Rock Drills.

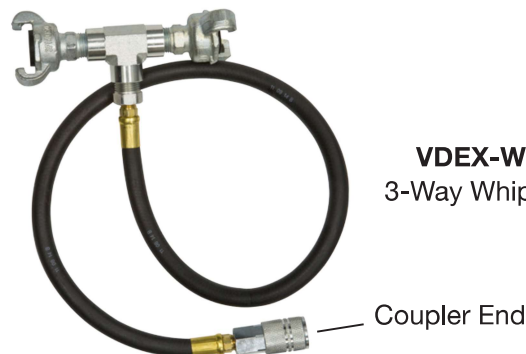
Once the air is connected, follow the remaining instructions provided in the operating manual. The water level, air pressure and volume is important to the performance of the vacuum. If these variables are not maintained the performance will vary.

The TAM3P uses water as a filter for the dust. It is not trying to pick up larger particles. It is to remove respirable dust from the work surface, away from the operator and direct it into the water. This unit operates at 90 psi on a 3/8" airline. Creating 25 cfm to 30 cfm of air flow through the vacuum line.

The water should be checked and changed out periodically. This will depend on the level of dust created. Breaking and busting produces significantly less dust than a Rock Drill or Roto Hammer. If the performance of the vacuum diminishes, check the water level and solids collected in the bottom of the pail. Empty accordingly to your job site regulations.



TAM3P
Venturi Vacuum
Complete with Pail &
1-1/4" x 10 ft
Anti-Static Vacuum Hose

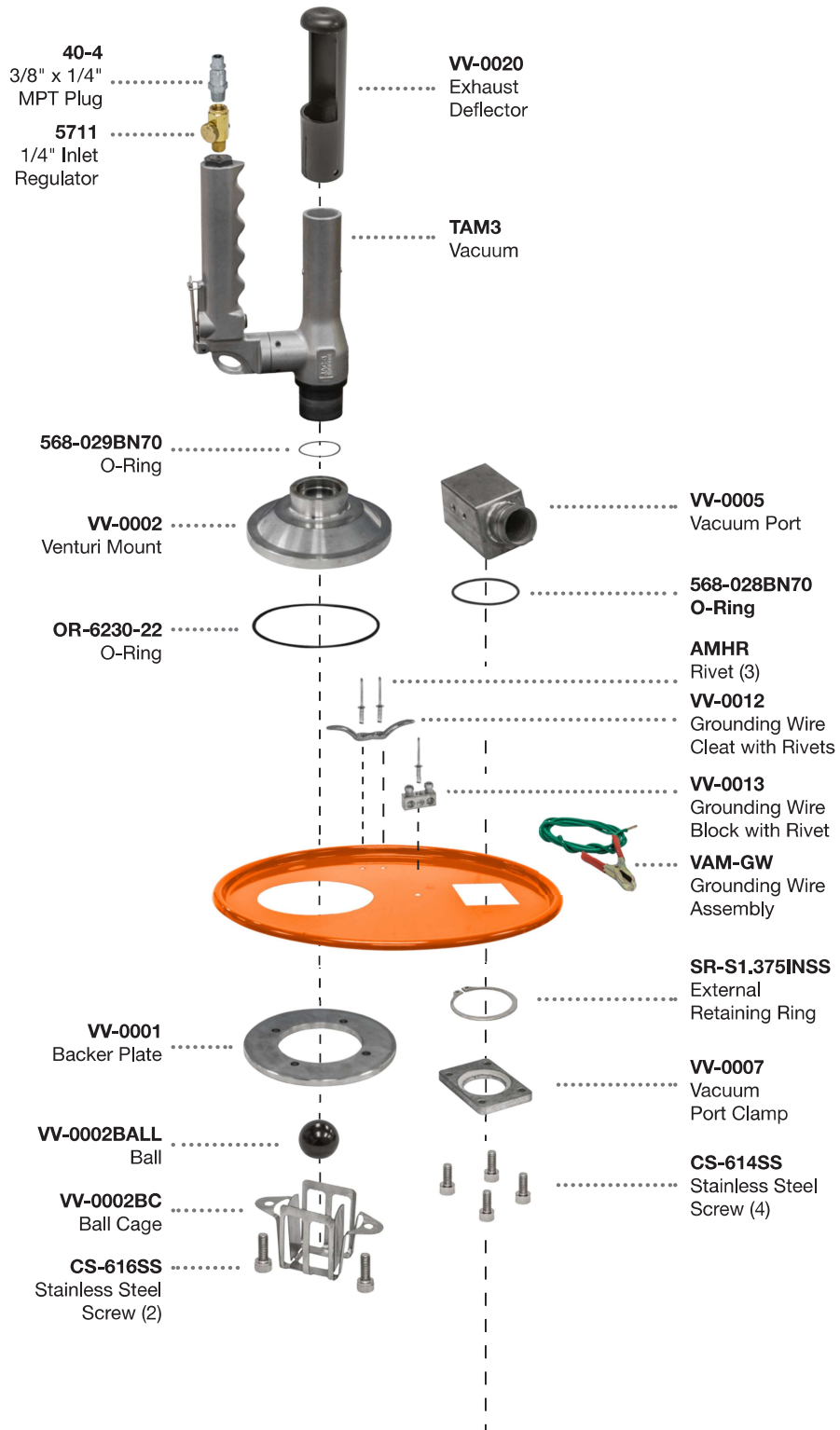


VDEX-WHIP
3-Way Whip Hose

Coupler End

TAM3P

Component Identification

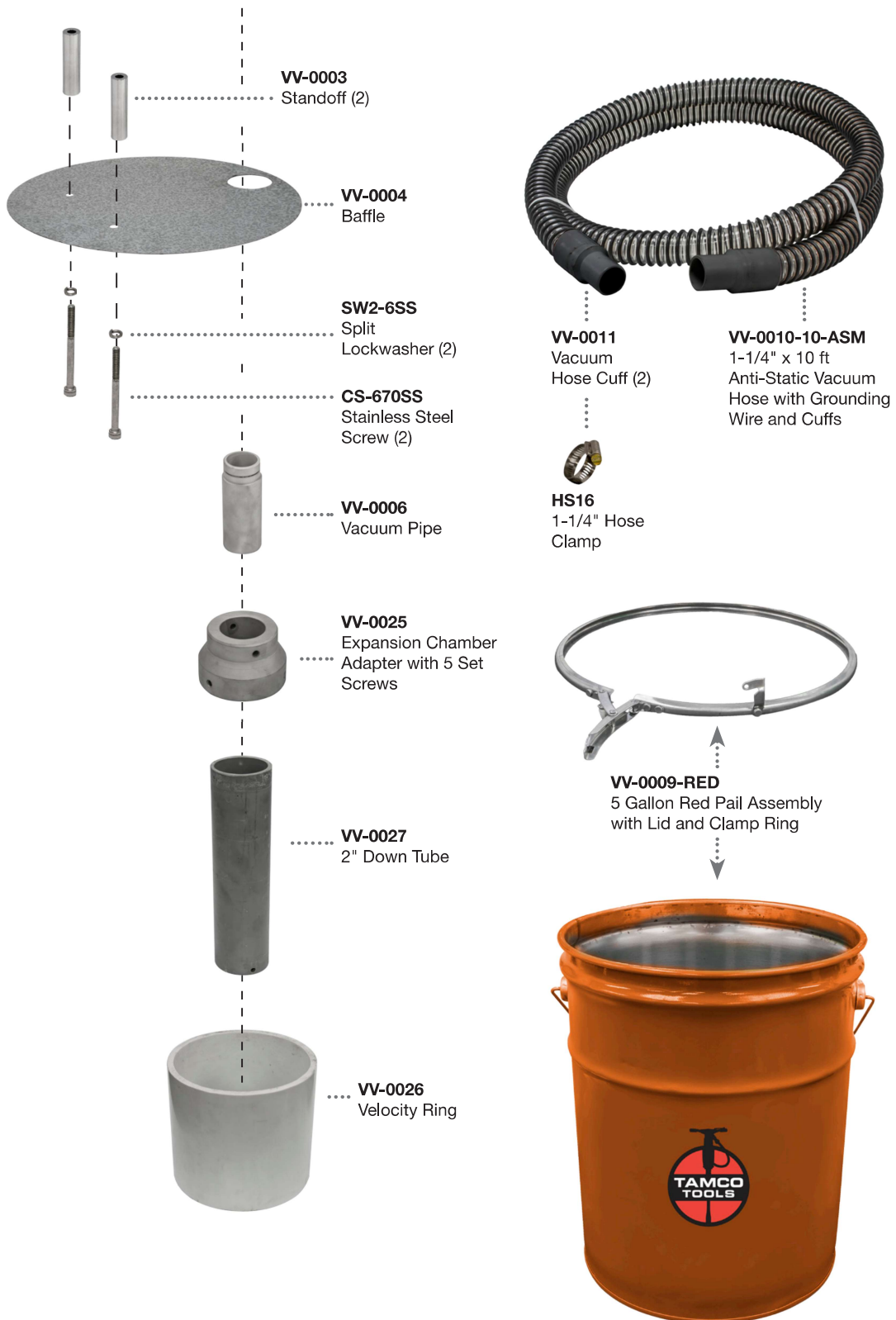


Continued on
Top of Page 11

TAM3P

Component Identification

Continued From
Bottom of Page 10



WHEN OPERATING TOOL. FAILURE TO DO SO WILL CAUSE EXCESSIVE WEAR AND DAMAGE.

TAM3P Installation

TAM3P Vacuum & Pail System

1. Remove the TAM3 from the box.
2. Install the TAM3 into the Vacuum Adapter on top of the Pail. There is an o-ring in the top of the Vacuum Adapter that will offer some initial resistance. Make sure the TAM-3 Vacuum is fully seated. Make sure to install the Exhaust Deflector (#VV-0020) on the top of the Vacuum.
IMPORTANT: If you do not have this on top, the Vacuum could expel dust or particles towards the operator.
3. Remove the Locking Ring that secures the Lid to the bottom section of the Pail.
4. Make sure the Velocity Ring (#VV-0026) is in the bottom of the Pail when you fill it with water. Do not fill water over the top of the Velocity Ring (#VV-0026). Fill the Pail with 4.5 to 5 inches of water. **NOTE:** If overfilled, water will be expelled from the top of the TAM3 vacuum when started.
5. Reinstall the Locking Ring that secures the Lid on to the bottom section of the Pail. Make sure the secondary Safety Lock is also latched.
6. For units sold prior to October 25th 2017, Install the Vacuum Hose with Copper Grounding Wire (#VV-0010-10-ASM) on to the Vacuum Port (#VV-0005) on the top of the Pail. Use the 1-1/4" Worm Gear Clamp (#HS16) to secure the Hose to the Vacuum Port.
For units sold after October 25th 2017, Your vacuum hose has one black cuff

and one white connecting cuff. The black end connects to the Vacuum Port (#VV-0005) on the top of the Pail. and the White end connects to the Snorkel (#2199-VDEX).

7. Install the Copper Wire on the Grounding Block (#VV-0013) using the only open screw hole.
8. Attach the other end of the Vacuum Hose (#VV-0010-10-ASM) on to the open port on the VDEX™ Snorkel (#2199-VDEX) or PB-RD-VDEX. Use the 1-1/4" Worm Gear Clamp (#HS16) to secure the Hose to the Snorkel.
9. Use the VDEX 3-Way Whip Hose (#VDEX-WHIP) to connect the end with the coupler to the TAM3P, then connect the air tool with one of the available CP Fittings. Lastly, connect your air supply to the TAM3P using the VDEX 3-Way Whip Hose. Depress the lever on the TAM3P and flip up the lever lock to start the vacuum.
10. Then begin using the air tool and collect the dust and small debris.

NOTE: The TAM3P comes equipped with additional External Grounding Wire with Clamp (#VAM-GW). Additional Grounding maybe desired or required in some applications.

NOTE: Overhead work will fill the TAM3P Pail faster than horizontal work.

Operating Tips

Operating Tips

- We recommend that you check the Pail every 2 hours of operation to examine the amount of dust and debris you are collecting as well as the remaining water level.
- If water comes out of the Exhaust Deflector (**VV-0020**) you have too much water in the Pail.
- If dust and debris begins to come out the Exhaust Deflector (**VV-0020**), you do not have enough water in the Pail or you have overfilled the Pail with dust and debris.
- There are no moving parts in the TAM3 vacuum. No maintenance necessary. Simply clean it from time to time by spraying it down with soap and water. If the air supply is dirty then you will clog the venturi ports in the TAM3 Vacuum and could cause a reduction in performance.
- Do not use the TAM3P to vacuum up water. There is no float mechanism in the Pail to automatically shut the Vacuum off when water reaches the suction port on the front of the venturi.
- Never apply the TAM3 Vacuum directly to your skin or clothes.
- Always wear eye protection when operating the TAM3 Vacuum, accompanying pneumatic tools, or any pneumatic tools.
- There is a brass in-line Regulator (**5711**) on the air inlet of the TAM3 Vacuum. This will increase and decrease the performance of the TAM3 Vacuum. Depending on the type of concrete or media that you are breaking, you may need more or less suction depending on the level of dust created. This Regulator is supplied for operator preference. Performance ratings of the TAM3 Vacuum are performed when the Regulator is fully open.
- Never work on, remove or install the CH-VDEX safety Retainers or RB-VDEX Sleeve, VDEX Attachments while the TAM3P Vacuum is operating. Disconnect all air before working on VDEX Attachments or TAM3P Vacuum systems.